



SeaDataCloud

# Connecting french coastal ecosystem monitoring databases to SeaDataNet infrastructure: SOMLIT and RESOMAR networks

Y. Del Amo<sup>1-5\*</sup>, N. Savoye<sup>1-5</sup>, S. Heussner<sup>2</sup>, N. Simon<sup>3</sup>, N. Lavesque<sup>1-5</sup>, A. Grémare<sup>1-5</sup>, S. Lahbib<sup>4-5</sup>, F. Mendès<sup>5</sup>, F. Delalee<sup>5</sup>, M. Hoebeke<sup>3</sup>, F. Rigaut-Jalabert<sup>3</sup>, P. Claquin<sup>6</sup>, M. Libes<sup>4</sup>, G. Grégori<sup>4</sup>, M. Thyssen<sup>4</sup>

<sup>1</sup>EPOC University of Bordeaux / CNRS, <sup>2</sup>CEFREM University of Perpignan / CNRS, <sup>3</sup>SBR Sorbonne University / CNRS, <sup>4</sup>MIO Aix-Marseille University / CNRS, <sup>5</sup>OASU University of Bordeaux / CNRS, <sup>6</sup>CREC BOREA University of Caen Normandie / CNRS

SOMLIT: French Coastal Monitoring Network (<http://somlit.epoc.u-bordeaux1.fr>)

RESOMAR: French Network of Marine Stations and Observatories (<http://resomar.cnrs.fr/>)

\*yolanda.del-amo@u-bordeaux.fr

**RESOMAR aims at federating marine laboratories and observatories involved in coastal physics, biogeochemistry, biology and geology in order to**



partners



## 1. Coordinate actions of national interest

- Flora and fauna databases
  - pelagic and benthic
- Workshops
  - Taxonomy (including ring tests)
  - Automated *in situ* measurements
  - Marine Strategy Framework Directive



## 2. Interlocutor and partner for

- Policy makers
- Network of French Marine Universities
- Marine Strategy Framework Directive



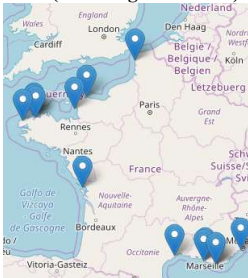
## 3. Coordinate structuring research projects

- BenthVAL
  - spatio-temporal dynamics of coastal benthic communities
- MOSLit
  - composition, dynamics and forcings of particulate organic matter in coastal systems
- JERICO
  - towards a joint European research infrastructure network for coastal observatories



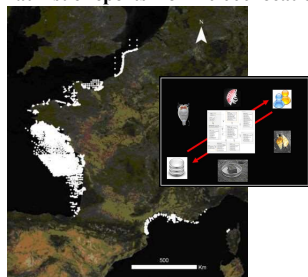
## RESOMAR PELAGOS DB

Coastal planktonic biodiversity data (including time-series)



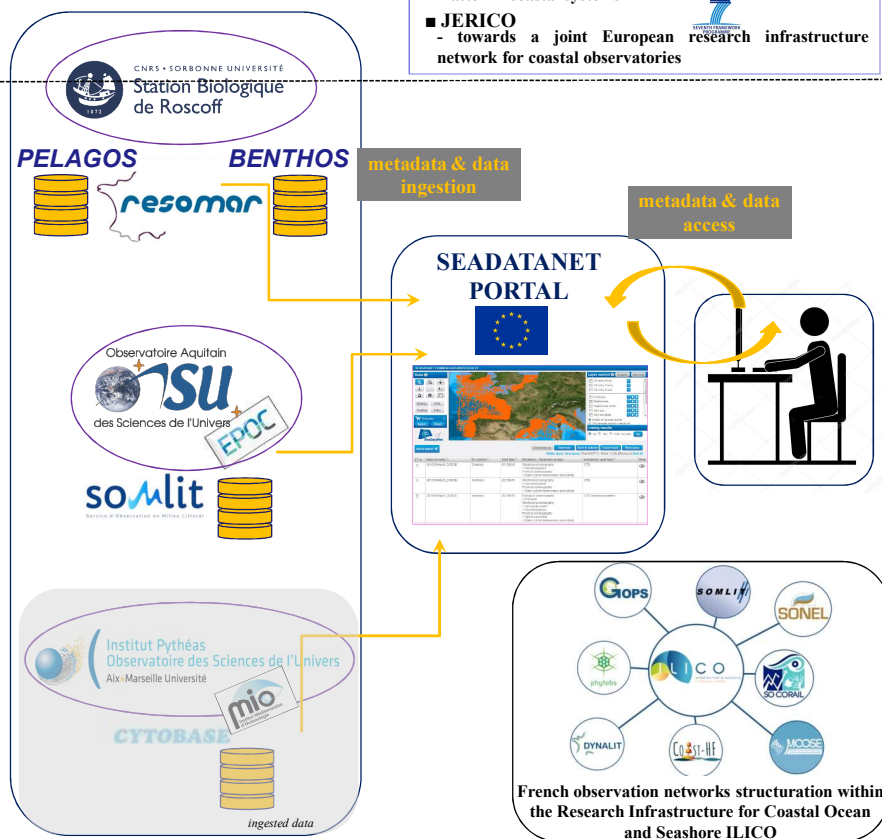
## RESOMAR BENTHOS DB

Large benthic database from the 1960's with 106 datasets, 300 000 faunistic reports from 10 000 locations



## SOMLIT DB

Physical, chemical, biological data

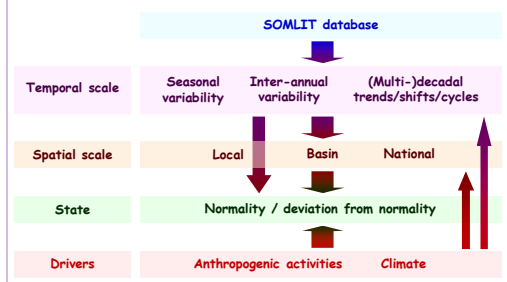


**SOMLIT aims at 1) studying multi-decadal changes of coastal systems and identifying climate and anthropic forcings and 2) disseminate data sets for scientific, educational and policy purposes**

## 1. Scientific strategy and aims

- 12 ecosystems (20 sampling stations)
- Surface water, high tide
- Bi-monthly sampling since 1996
- 16 Essential Ocean Variables:
  - temperature, salinity, pH, O<sub>2</sub>
  - NO<sub>3</sub><sup>-</sup>, NO<sub>2</sub><sup>-</sup>, NH<sub>4</sub><sup>+</sup>, PO<sub>4</sub><sup>3-</sup>, Si(OH)<sub>4</sub>
  - SPM, POC, PN, chlorophyll *a*,
  - + δ<sup>13</sup>C<sub>POC</sub>, δ<sup>15</sup>N<sub>PN</sub>
  - + pico-nanoplankton (flow cytometry data)

## 2. Scientific aims



## 3. SOMLIT quality assurance

