

EMODnet Data Ingestion: 'Wake up your data'

IMDIS 2018 Conference, 5 November 2018, Barcelona - Spain

Dick M.A. Schaap

Sissy Iona

Francis Strobbe

MARIS (NL)

HCMR (GR)

RBINS (BE)



EMODnet



Situation

- ① Quality controlled and accurate data of the marine environment are essential for many applications in the Blue Society: research, governance, and industry.
- ① The costs of marine data collection by European organisations is circa **1.4 billion Euro per year**: ~ 1.0 billion for in-situ; ~ 0.4 billion for remote sensing.
- ① A major part is nowadays discoverable and accessible thanks to marine data management infrastructures and activities in Europe, such as national data centres, SeaDataNet, EurOBIS, PANGAEA, EGDI, IHO, CMEMS, EuroGOOS, and others. And EMODnet has given an enormous boost to cooperation and seeking interoperability and harmonization.
- ① However there is still a lot of valuable marine data collected and sitting at public authorities, research communities, and industry, which do not arrive at these national and European repositories.

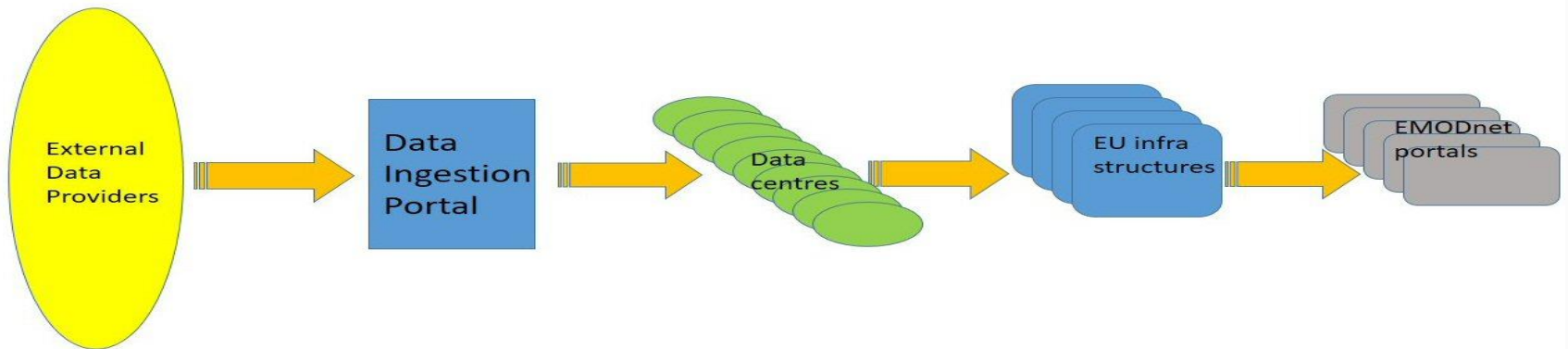


EMODnet



Aims of EMODnet Ingestion

- ⦿ To wake up these idle datasets by identifying, encouraging and supporting their data holders
- ⦿ To launch and operate an extra EMODnet portal with services to facilitate data holders submitting marine data sets for publishing, further processing and safekeeping by expert data centres, and subsequent distribution through EMODnet thematic portals





Portal – launched Feb 2017



DATA INGESTION PORTAL

Wake up your data - set them free for Blue Society

[CONTACT](#)

[ABOUT](#) [DATA SUBMISSION](#) [OPERATIONAL DATA](#) [SUBMISSIONS](#) [GUIDELINES](#) [DATA WANTED](#) [HELP](#) [PROMOTION](#) [CENTRAL PORTAL](#)

Home

Welcome to the EMODnet Data Ingestion portal

The European Marine Observation and Data Network (EMODnet) consists of more than 160 organisations that together work on assembling, harmonising and making marine data, products and metadata more available to public and private users. This Data Ingestion portal facilitates additional data managers to ingest their marine datasets for further processing, publishing as open data and contributing to applications for society.

[READ MORE](#)

EMODNET INGESTION

AND HOW DOES IT WORK



Submit your data files

The online Data Submission service facilitates you to submit marine datasets by completing a form and uploading your data as a file package. The service



Ingest operational data

We are also interested in (Near) Real-Time ((N)RT) data streams from fixed and autonomous ocean observing platforms. This section explains how you



View submissions

View, search and download datasets that have been submitted by data providers using the Data Submission service.

www.emodnet-ingestion.eu



Submission Service for data files



DATA INGESTION PORTAL

Wake up your data - set them free for Blue Society
Data Submission Service

[CONTINUE >](#)

Welcome to the Data Submission service of the EMODnet Data Ingestion portal. This service facilitates you to submit marine datasets by completing a form and uploading your data as a package. Press "Continue" to start.



Data Submission Service



DATA INGESTION PORTAL

Wake up your data - set them free for Blue Society

Data Submission Service

DASHBOARD

WELCOME DICK M.A. SCHAAP | LOGOUT

DATA SUBMITTER

- USERS PROFILE
- DATA SUBMISSIONS

DATA CENTRE

- USERS
- DATA SUBMISSIONS
- KEY INDICATORS
- VOCAB ORPHANS

MASTER

- USERS
- DATA SUBMISSIONS
- KEY INDICATORS
- VOCAB ORPHANS
- DC CATALOGUE
- DC SPECIALISMS

Dashboard with functions depending on role: Data Submitter; Data Centre; Master



Data Submission service



DATA INGESTION PORTAL

Wake up your data - set them free for Blue Society

Data Submission Service

[DASHBOARD](#) | [BACK TO LIST](#)

WELCOME DICK M.A. SCHAAP (M) | [LOGOUT](#)



Dataset Identification

* = Required

DATASET GENERAL INFORMATION

Title of dataset * 2011-GEMS, Zone 8 - Bristol Channel Atlantic Array, Metocean assessment

Narrative summary of dataset * GEMS Survey Ltd. (GEMS) was awarded a contract by Channel Energy Limited to undertake metocean data collection in the Bristol Channel as part of the Atlantic Array wind farm development project. The scope of work includes the deployment of two acoustic wave and current (AWAC) units and one Directional Waverider Buoy. Ancillary work includes water and sediment sampling and water profiling. Following non-recovery of AWAC devices, TRIAXYS Directional Wave buoys were utilised for the rest of the survey. This series contains both reports and datasets associated with the Metocean Assessment.

DATASET FORMATS

Dataset format * Text or Plaintext



EMODnet



European Marine
Observation and
Data Network

Data Submission service

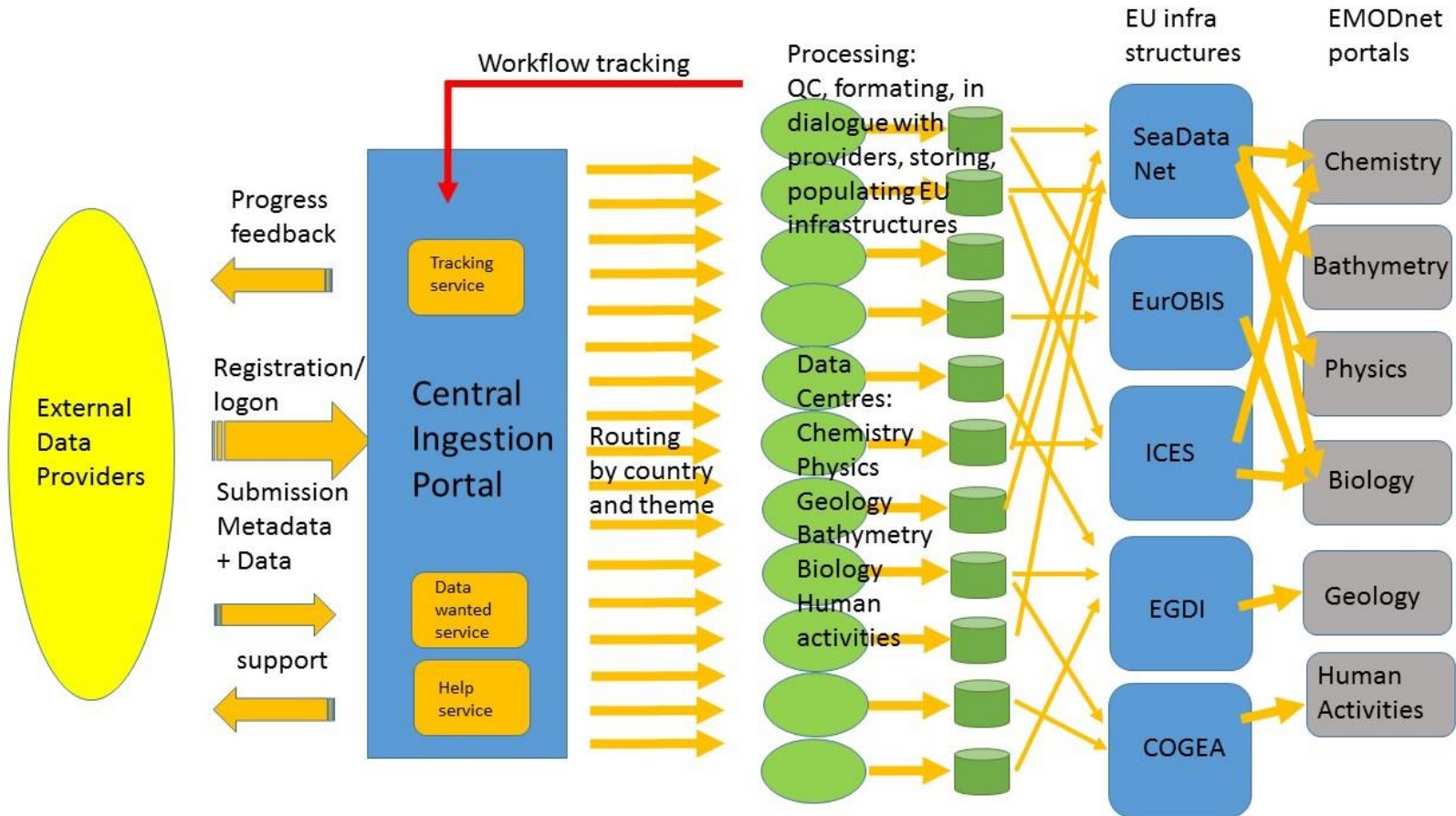
- ⦿ Distinction between 2 phases in the life cycle of a data submission:
 - ⦿ **Phase I:** from data submission to publishing ‘*as is*’
 - ⦿ **Phase II:** further elaboration and integration (of subsets) in national, European and EMODnet thematic portals.
- ⦿ **Step 1: Data submitter** completes a number of key fields of the submission form and uploads a zip file with the datasets and related documentation;
- ⦿ **Step 2: Data Centre** is assigned who reviews and completes the submission form for publishing ‘*as is*’ in **Summary Service**
- ⦿ **Step 3: Data Centre** elaborates, where possible, the data sets, resulting in availability **in standard formats** in EMODnet thematic portals



EMODnet



Data processing pathways





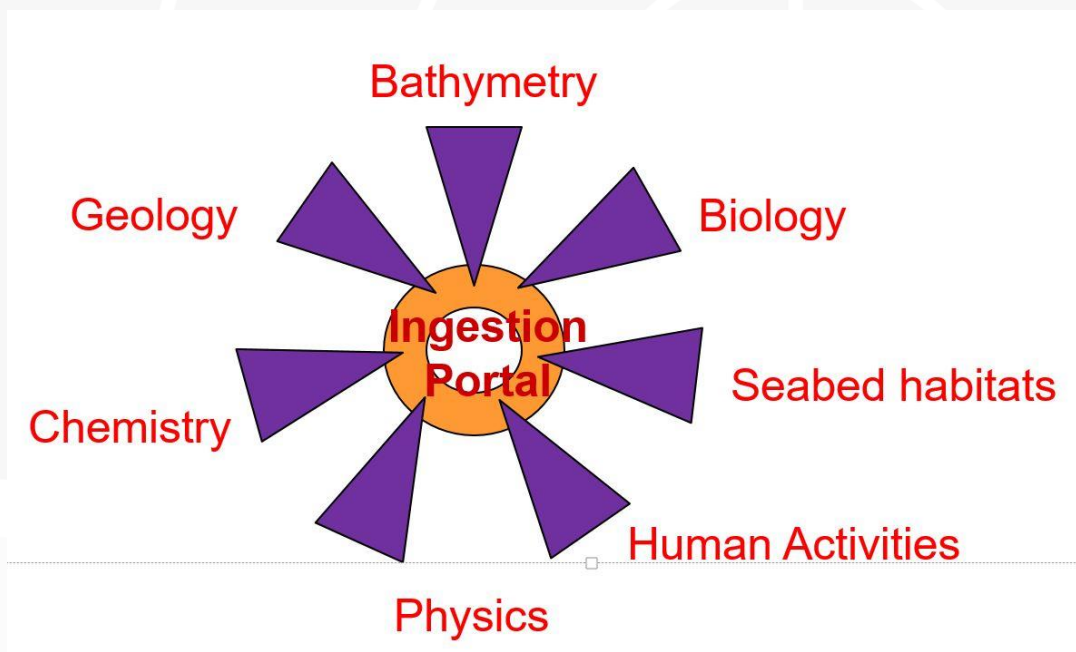
EMODnet



European Marine
Observation and
Data Network

Pathways and collaboration with thematic lots

- 📍 Network of data centres 'recruited' from EMODnet Ingestion and Thematic portals consortia to act as 'assigned data centres'
- 📍 At present **49** Data Centres covering all thematics





Submission Viewing service



DATA INGESTION PORTAL

Wake up your data - set them free for Blue Society

[CONTACT US](#)

- ABOUT
- DATA SUBMISSION
- OPERATIONAL DATA
- SUBMISSIONS**
- GUIDELINES
- DATA WANTED
- HELP
- PROMOTION
- CENTRAL PORTAL

Home / Submissions

View submissions

This service allows users to search and download the datasets that have been submitted via the Submission service and that have been reviewed and completed in metadata by assigned data centers. These datasets are published "as-is" and will be further inspected and elaborated, where possible, for uptake in the national and European infrastructures supporting EMODnet.

Filter Search

Free search

Input string

Date [yyyymmdd]

Date from

Date to

Geobox

RESET **SEND**


Sea areas

Found 204 Show (1 - 20) < Prev Next >

- Results**
- Aquaculture in Maltese waters**

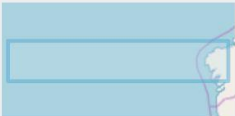
Period: 2018-10-01 - 2025-12-31

Observation type: Administration and dimensions


 - FinisGlider deployment (EGO glider : bonpland) (Atlantic Ocean). JERICO-NEXT TNA**


Period: 2017-06-27 - 2017-08-18

Observation type: Other physical oceanographic measurements,Water column temperature and salinity


 - MEPA Coastal Water Survey - Pollutants in Biota 2012**

Period: 2012-05-30 - 2012-08-07

Observation type: Halocarbons (including freons),Metal and metalloid concentrations,Pollution





EMODnet

Ingesting operational data - NRT

ABOUT DATA SUBMISSION OPERATIONAL DATA SUBMISSIONS GUIDELINES DATA WANTED HELP PROMOTION CENTRAL PORTAL

Home / Operational Data

NAVIGATE

PILLARS UNDER EMODNET
PHYSICS

HOW IS THE OPERATIONAL
OCEANOGRAPHY DATA
EXCHANGE ORGANISED

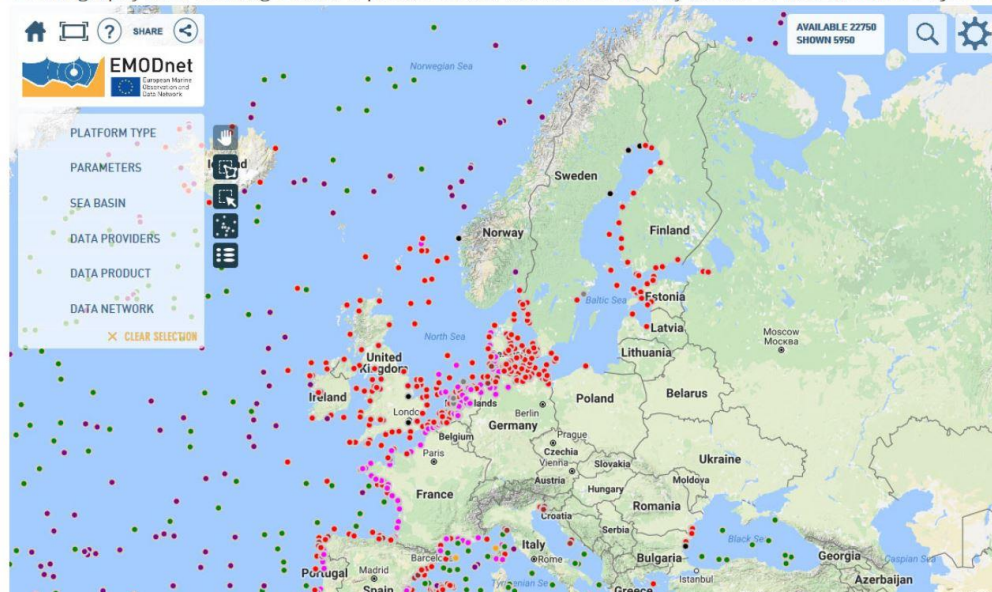
HOW CAN YOU JOIN THE
OPERATIONAL OCEANOGRAPHY
DATA EXCHANGE



Join the European operational oceanography exchange

EMODnet Ingestion aims at making marine data part of the European data management infrastructures. This concerns marine data from the European seas and coastal waters from diverse governmental, research and private sources. It concerns data that have been collected by all kinds of surveys, campaigns, and projects.

It also concerns **operational oceanography data** that are collected by fixed and moving platforms such as fixed stations, moorings, buoys, tide gauges, surface drifters, ferryboxes, argo floats, gliders, HF radars and other platforms. These platforms generate Near Real Time (NRT) data streams which should become part of the European operational oceanography data exchange which is promoted and made accessible by means of the **EMODnet Physics portal**.

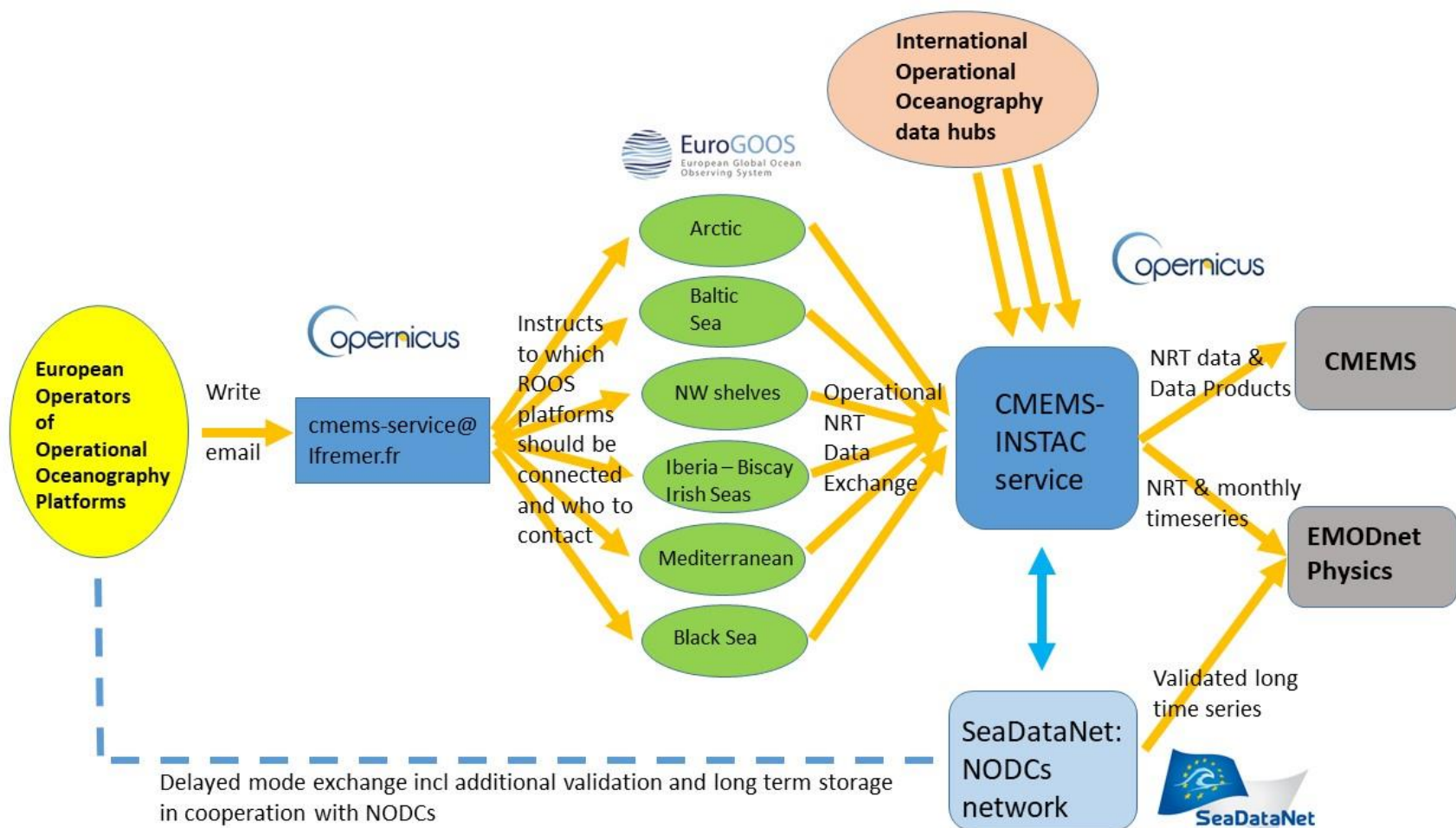




EMODnet



Ingesting operational data – NRT and delayed mode time series





EMODnet



Marketing and outreach activities

- ① Identify potential data sources and data providers
- ① Reach out to potential data providers
- ① Motivate data providers to participate with their data submissions
- ① Market and promote the Data Ingestion service and its function in the overall EMODnet scheme
- ① Data Centres function as EMODnet ambassadors
- ① Organisation of national EMODnet days in several countries
- ① Presentations at many conferences
- ① Promotional material: roll-out, bookmarks, poster, standard presentations, leaflets, video
- ① Links at all EMODnet portals

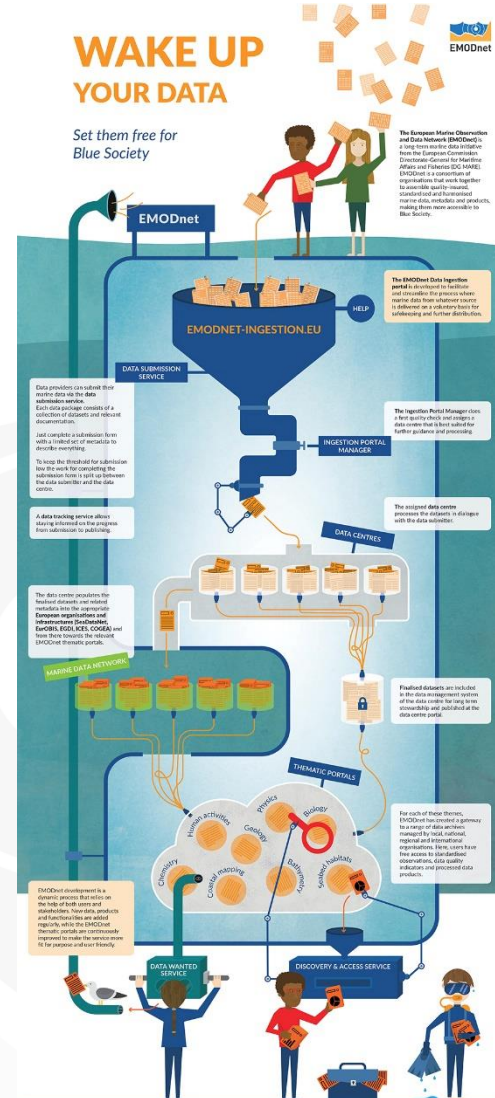
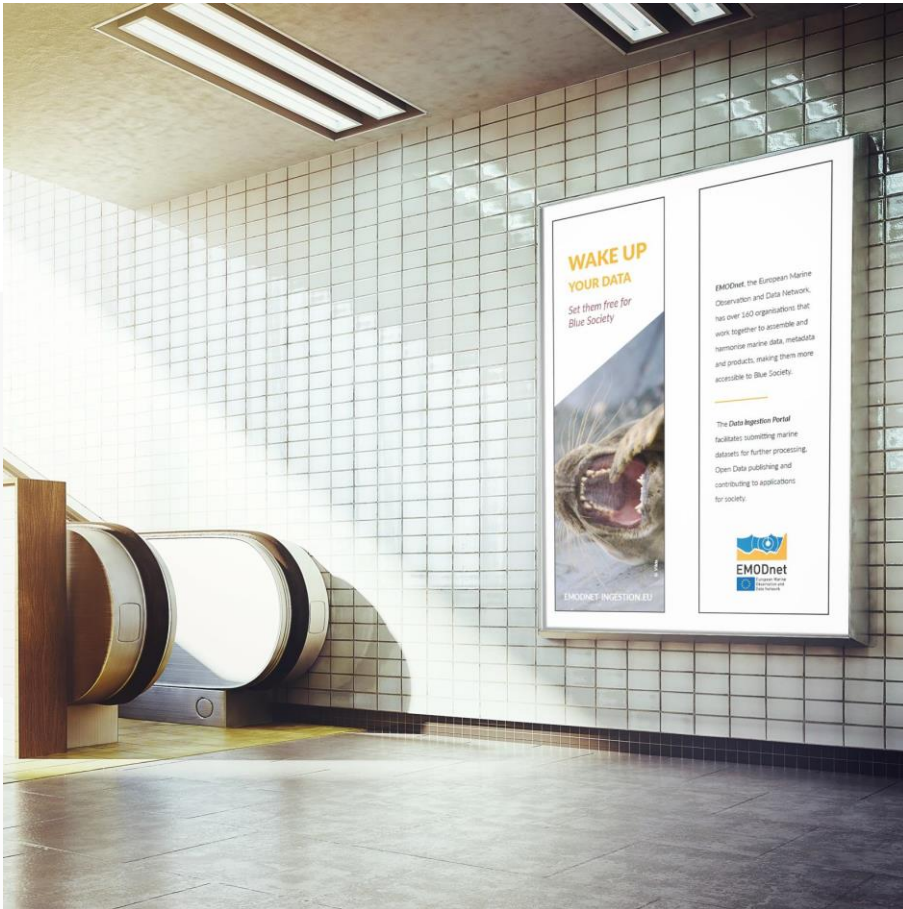


EMODnet



European Marine
Observation and
Data Network

Marketing and outreach activities





EMODnet



European Marine
Observation and
Data Network

Marketing and outreach activities

**WAKE UP
YOUR DATA**

*Set them free for
Blue Society*

© A. Nervo / RBINS

EMODNET-INGESTION.EU

**WAKE UP
YOUR DATA**

*Set them free for
Blue Society*

© A. Nervo / RBINS

EMODNET-INGESTION.EU

**WAKE UP
YOUR DATA**

*Set them free for
Blue Society*

© A. Nervo / RBINS

EMODNET-INGESTION.EU

**WAKE UP
YOUR DATA**

*Set them free for
Blue Society*

© V&A

EMODNET-INGESTION.EU

EMODnet, the European Marine Observation and Data Network, has over 160 organisations that work together to assemble and harmonise marine data, metadata and products, making them more accessible to Blue Society.

The **Data Ingestion Portal** facilitates submitting marine datasets for further processing, Open Data publishing and contributing to applications for society.

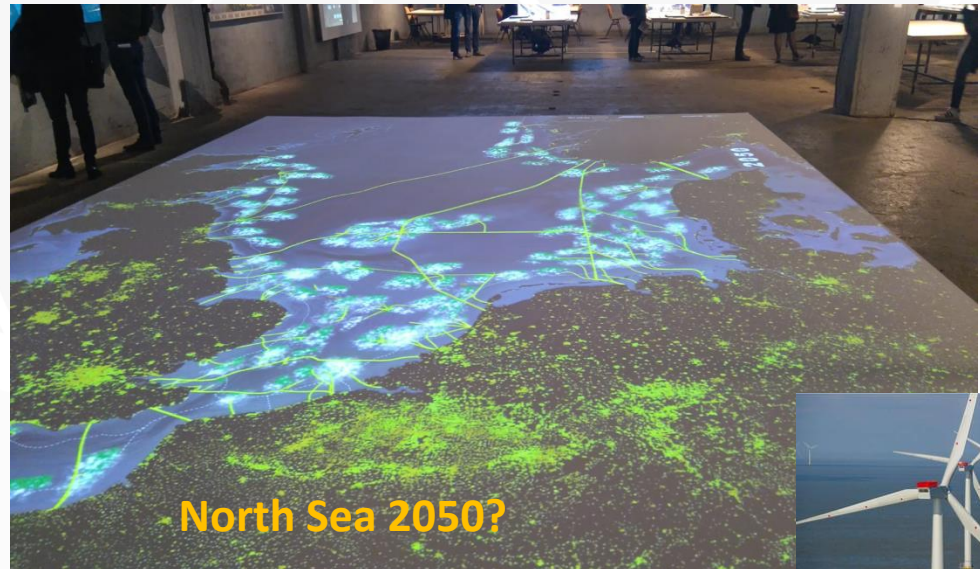


EMODnet



Attracting industry

- ① Industry is already using several EMODnet products and services, such as the EMODnet high resolution digital bathymetry for European seas, the harmonised geological maps, NRT physics timeseries, and others.
- ① Industry can be motivated to add value to these products and services by their data contributions which might enrich the EMODnet products they are using: **a clear business proposition.**
- ① In addition, government can use its leverage, e.g. in case of licensing for offshore activities, requiring impact assessment monitoring and open access to acquired datasets.





EMODnet



European Marine
Observation and
Data Network

Portal statistics

Month	Unique visitors	Number of visits	Pages	Hits
Apr-17	5,617	6,128	9,846	19,068
May-17	5,935	6,424	15,824	25,282
Jun-17	5,754	6,206	49,675	53,944
Jul-17	5,789	6,175	51,582	57,601
Aug-17	7,121	7,563	53,292	59,510
Sep-17	8,404	9,048	56,856	71,498
Oct-17	8,260	9,150	60,049	80,101
Nov-17	9,271	10,409	58,818	76,237
Dec-17	8,460	9,370	57,147	64,709
Jan-18	9,207	10,342	62,154	73,552
Feb-18	7,653	8,569	60,311	70,556
Mar-18	8,318	9,279	58,554	71,636
Apr-18	7,889	9,054	58,163	75,463
May-18	7,803	9,044	58,264	72,124
Jun-18	7,950	9,245	54,681	64,393
Jul-18	7,624	9,043	57,140	65,527
Aug-18	5,057	5,975	53,504	60,418
Sep-18	4,159	4,973	51,380	66,515
Oct-18	4,600	7,815	73,248	94,113

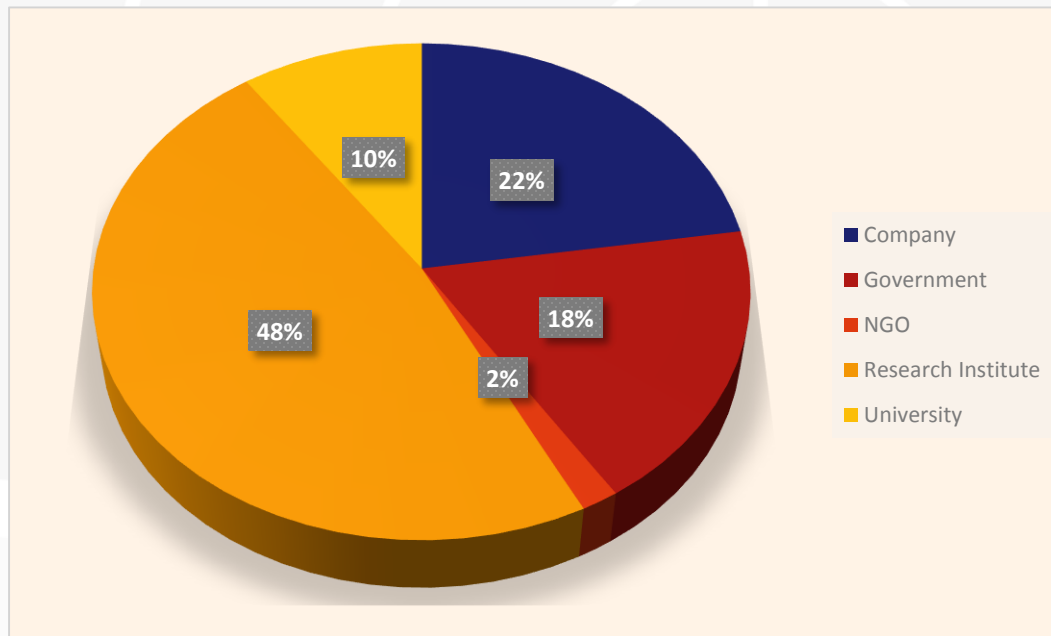


EMODnet



Status of submissions

- At present **>250** submissions recorded in different stages of processing
- Of which **204** published at the Viewing Submissions Service, of which **42** as 'phase II completed'



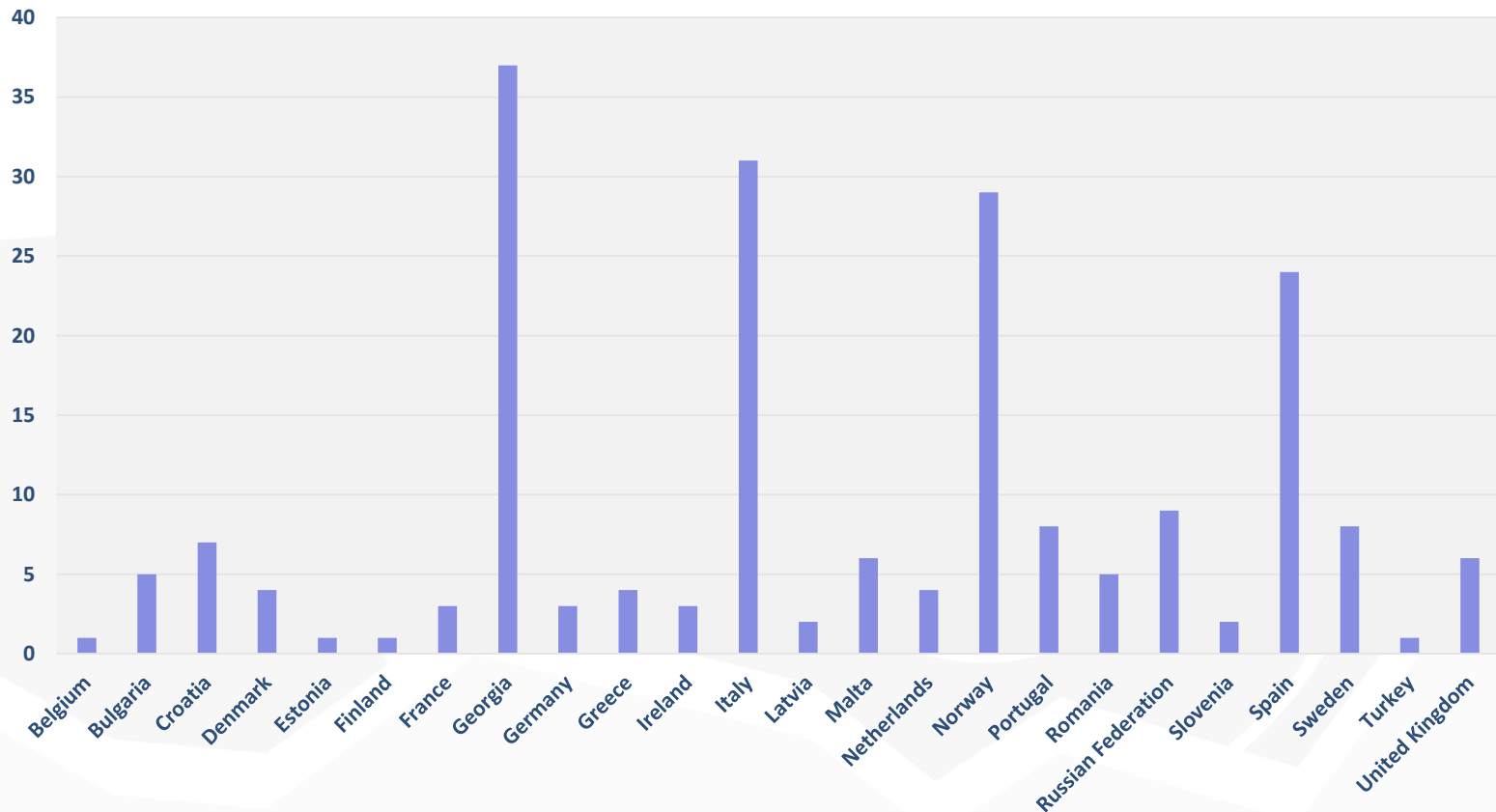


EMODnet



European Marine
Observation and
Data Network

Published submissions per country

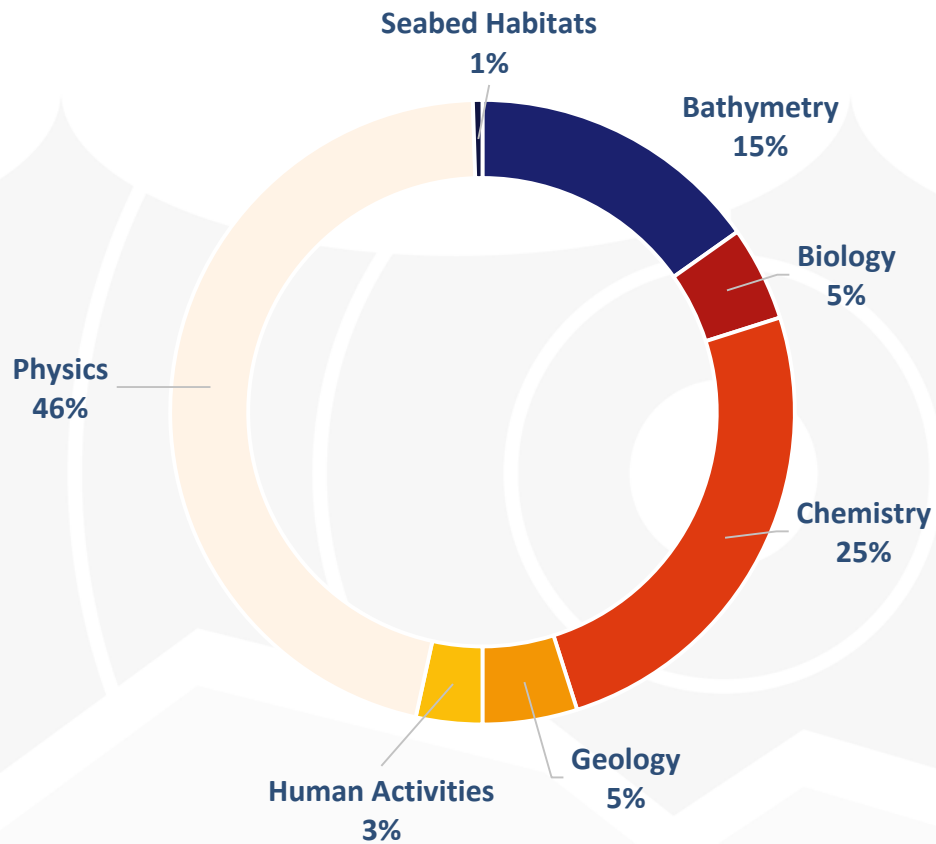




EMODnet

European Marine
Observation and
Data Network

Published submissions per theme

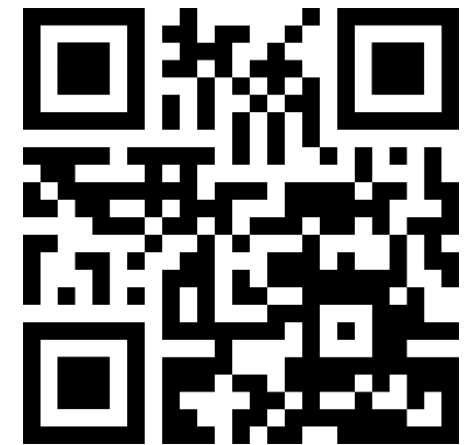
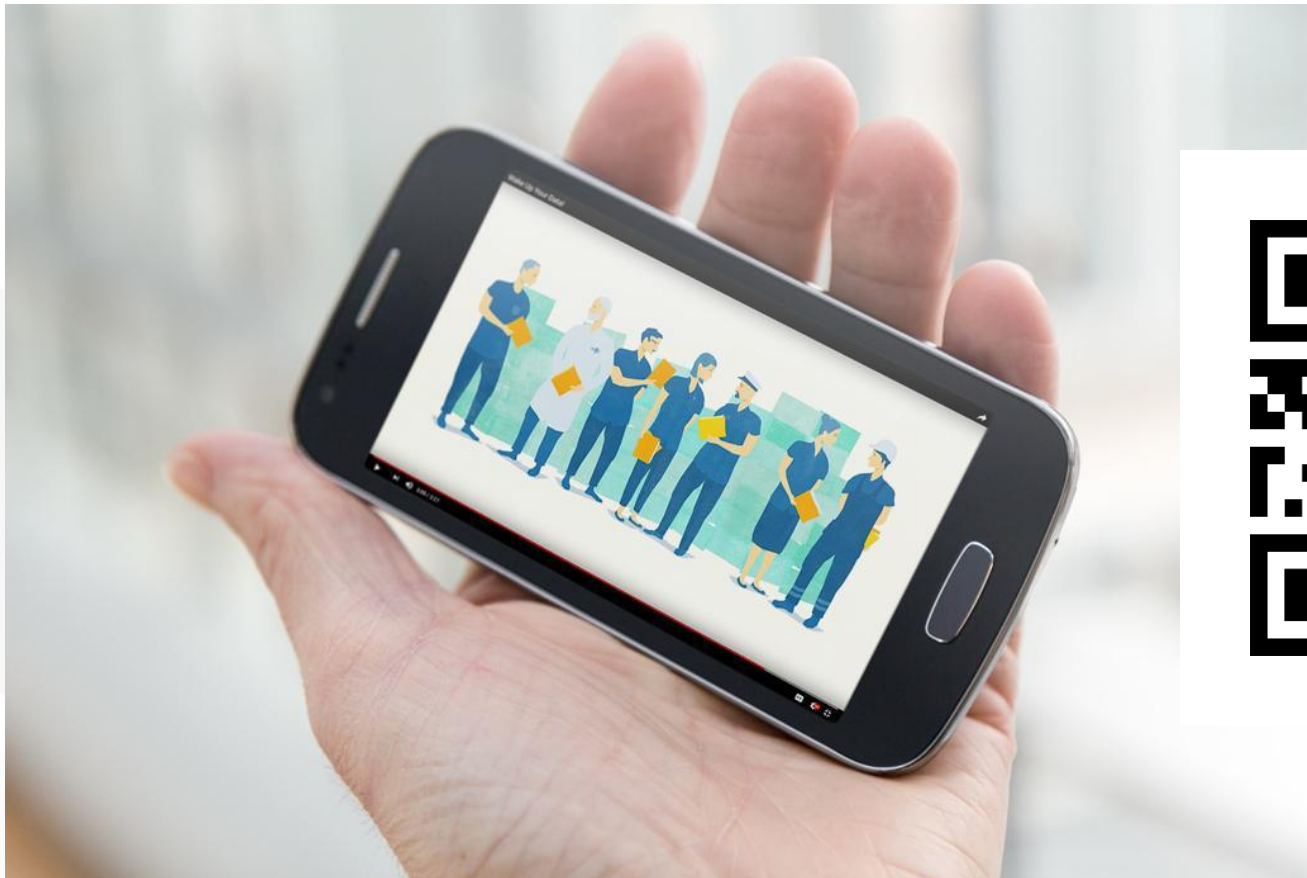


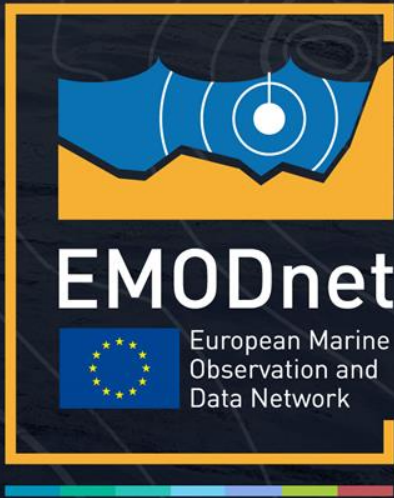


EMODnet

European Marine
Observation and
Data Network

Animation 'Wake up your data'





www.emodnet.eu

Your gateway to marine data in Europe